



Product End of Life Disassembly Instructions

1. **Product Category:** Thin Client
2. **Marking Name / Model:** UltrArmor UA2 / N260
3. **System No.:** 10D3H30xxx
4. **PURPOSE:**

This document is intended for use by end-of-life recyclers or treatment facilities. It provides the basic instructions for the disassembly of UltrArmor UA2 products to remove components and materials requiring selective treatment, as defined by EU WEEE Directive 2012/19/EU

5. **Selective Treatment for Material and Components according to ANNEX VII of DIRECTIVE 2012/19/EU on waste electrical and electronic equipment (WEEE)**

Item Description	Notes	Q'ty of items included in product
Printed Circuit Boards (PCB) or Printed Circuit Assemblies (PCA)	With a surface greater than 10 sq cm	In UA2: <ul style="list-style-type: none"> ● Main Board x1^{*1} ● memory modules x1^{*2} ● In power adapter x1^{*3}
Batteries	All types including standard alkaline and lithium coin or button style batteries	Lithium Coin Battery x1 ^{*4}
Mercury-Containing Components	For example, mercury in lamps, display backlights, scanner lamps, switches, batteries	
Liquid Crystal Displays(KCD) with a surface greater than 100 sq cm	Includes background illuminated displays with gas discharge lamps	
Cathode Ray Tubes (CRT)		
Capacitors / condensers (Containing PCB/PCT)		
Electrolytic Capacitors / Condensers measuring greater than 2.5 cm in diameter or height		Not used in UA2 N260. in power adapter x1 ^{*5}
External Electrical Cables and cords		Power Cord for power adapter ^{*6}
Gas Discharge Lamps		
Plastics Containing Brominated Flame Retardants		
Components and parts containing toner and ink, including liquids, semi-liquids (gel/paste) and toner	Include the cartridges, print heads, tubes, vent chambers, and service stations	
Components and waste containing asbestos		
Components, parts and materials containing refractory ceramic fibers		
Components, parts and materials containing radioactive substances		

- *1: See 7-6: Remove Main Board in page 5
- *2: See 7-3: Remove mSATA SSD, RTC Battery, SO-DIMM Memory Modules in Page 4
- *3: See 8-5. Electrolytic Capacitors / Condensers measuring greater than 2.5 cm in diameter or height in page 8
- *4: See 7-3. Remove mSATA SSD, RTC Battery, SO-DIMM Memory Modules in page 4
- *5: See 8-5. Electrolytic Capacitors / Condensers measuring greater than 2.5 cm in diameter or height in page 8
- *6: See 8-2. External Electrical Cables and cords in page 7

6. Type and size of the tools that would typically be used to disassemble the product to a point where components and materials requiring selective treatment can be removed



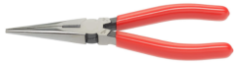
Philips screwdriver
Slotted screwdriver



Hammer





Stanley knife or similar








Needle-nose pliers

7. Disassembly Process.





7-1. Remove Foot Stand

 <p>① Foot Stand</p>	<p>① Loosen the quick release screw on the foot stand to detach it from the device.</p>  <p>M3*12L*0.5P</p>
--	--

7-2. Remove Top Cover




	<p>Remove two screws (M3*6L*0.5P) on the rear panel</p>   <p>Push in the direction of the arrow to remove the top cover</p>  
---	--

7-3. Remove mSATA SSD, RTC Battery, SO-DIMM Memory Modules

	 <p>① Loosen the screw (M2*3.2L*0.4P) to remove the SSD</p>
	 <p>② Remove the coin battery</p>
	 <p>③ Pull apart the memory slot levers on both sides, unlock and pull out the memory module</p>

- ① mSATA SSD (Optional)
- ② RTC Battery
- ③ SO DIMM Memory Module

7-4. Remove Rear I/O Panel

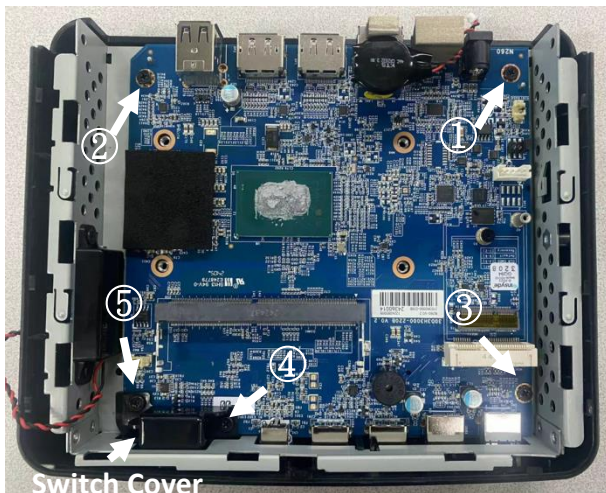
	<p>Remove two screws (M3*4L*0.5P) on two sides of the rear panel</p>  
--	---

7-5. Remove CPU Heatsink



Loose four spring screws and remove the CPU heatsink

7-6. Remove Main Board



Pull up the speaker wire

Remove ①~⑤ screws and power switch cover



M3*6L*0.53P



Power Switch Cover

7-7. Remove on-board EMI parts & CPU Bracket

		<p>① Remove EMI Gasket on LAN ports ② Remove EMI Gasket on USB ports</p>
<p>① EMI Gasket on LAN ports ② EMI Gasket on USB ports ③ Sponge ④ EMI Gasket (Bottom Side)</p>		<p>③ Remove Sponge</p>
		<p>④ Remove EMI Gasket on bottom side</p>

7-8. De-assemble Bottom Cover Assembly Parts

	<p>① Loosen two screws to remove speaker cover</p>
<p>① Speaker Cover ② Thermal Pad</p>	
	<p>② Peel off the thermal Pad from the metal base</p>

7-9. Disassemble Base Assembly Parts

<p>The image shows the internal metal base of the device. A white arrow labeled '2' points to the left, indicating the direction to push the base. A circled '1' is placed over a screw. Four points are labeled 'a', 'b', 'c', and 'd', corresponding to plastic hooks mentioned in the instructions.</p>	<ul style="list-style-type: none"> ① Loosen and remove this screw (M3*4L*1P) ② Push inner metal base in the direction of arrow and ensure that the four-point plastic hooks (a,b,c,d) are disengaged from the fixed state to remove the metal piece
--	---

8. Disposal

After you have disassembled the device completely, carefully dispose of the individual parts.

8-1. Representative plastics reference list (over 25g)



Bottom Base
(116g)



Top Cover
(68g)



Foot Stand
(31g)

8-2. External Electrical Cables and cords



8-3. Printed Circuit Boards (PCB) or Printed Circuit Assemblies (PCA)



System Main Board



SO DIMM Memory



mSATA SSD
(Optional)



Power Adaptor

8-4. Battery



Lithium Coin Battery

8-5. Electrolytic Capacitors / Condensers measuring greater than 2.5 cm in diameter or height

Notice 1: No such part designed in UA2 N260 product but it can be found in power adaptor.

Notice 2: These instructions are intended solely for recycling organizations for disposal purposes only! After opening the power supply unit, it must no longer be used.

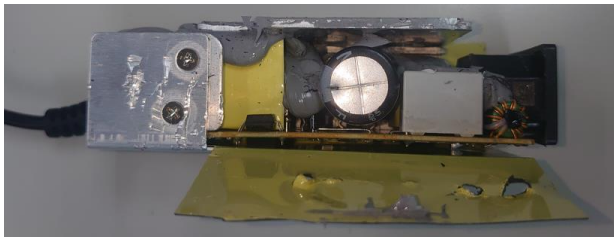
Step 1: Disassemble plastic housing

Use hammers, screw driver to break the plastic housing at the sealed joint



Step 2: Disassemble the metal & plastic parts around PCBA Module

Release the screws on brackets and PCB heatsink on the back to take them off and isolated mylar, too.



Step 3: Capacitor is accessible to be removed

Release two pins on the capacitor with pliers then remove the capacitor.

